

Instructions

Assembly
Installation
Operation

06/2009

Wellspring™ Round Table

Recommended procedure for assembling Wellspring™ dining tables:

WARNING! TO AVOID INJURY TO PERSONS HANDLING TABLES, USE TWO PERSONS TO TEAM LIFT AND CARRY.

Hardware included for assembling table:

- (1) Table Top
- (1) Table Base
- (1) The Freestanding Table Hardware Pack - includes:
 - (4) 1/4-20 x 7/8" Pan Head, Phillips, Machine Screw
 - (1) Wooden Umbrella Plug
 - (4) 1/4" Flat Washer,
 - (4) Adjustable Glide

OR,

- (1) The Surface Mount Table Hardware Pack - includes:
 - (4) 1/4-20 X 7/8 Pan Head, Phillips, Machine Screw
 - (1) 1/4-20 X 5 Hex Head Cap Screw
 - (1) Wooden Umbrella Plug
 - (6) 1/4" Flat Washer
 - (1) 1/4-20 UNC Threaded Stop Nut W/ Nylon Insert
 - (1) Rubber Umbrella Hole Grommet - LFI Logo

Tools required for attaching hardware:

- #2 Phillips Screwdriver
- Furniture Blanket or Shipping Pad

Note:

DO NOT DRAG or ROLL table across concrete or other rough surfaces. This could damage the wood surfaces.

Table Top and Base Assembly Instructions

1. Locate the hardware pack shipped with each table.
2. Carefully place table top upside down on a protective surface such as a blanket or shipping pad.
3. If the table is being installed with an umbrella, skip to step 5.
4. If the table is not being installed with an umbrella, locate the wooden umbrella plug and place into the center hole as shown below. NOTE the smaller diameter end of the plug should be inserted into the hole allowing the larger diameter end to prevent the plug from being removed after assembly.

landscapeforms®

Page 1 of 5

Instructions

Assembly
Installation
Operation

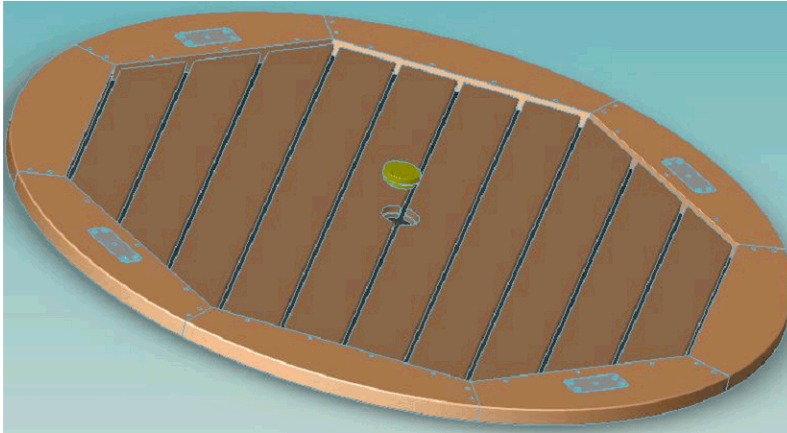


Figure 1 – Insert plug into hole as shown

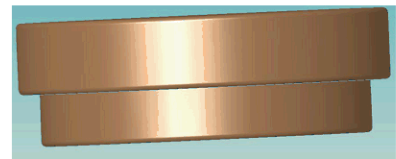


Figure 2 – Plug orientation

5. Place the base assembly onto the table top as shown, aligning the four support arms with the four metal plates in the table top

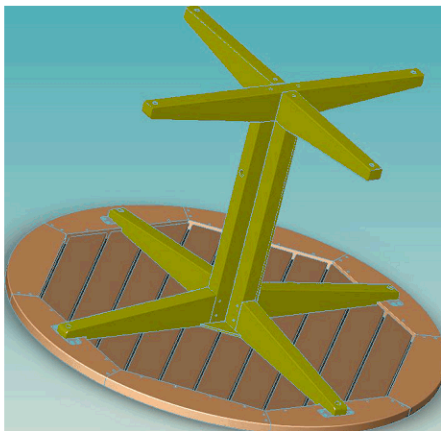


Figure 3 – Table base installation

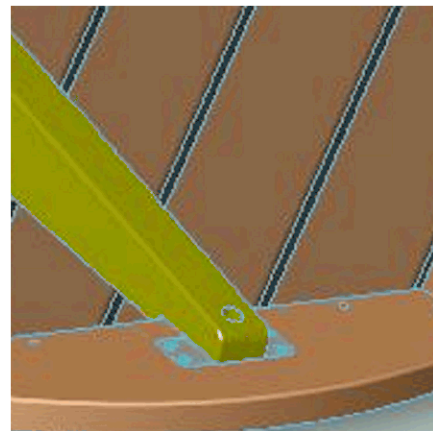


Figure 4 – Support arm alignment

6. Align the hole in the support arm with the threaded hole in the center of the metal plate
7. Place one (1) 1/4" Flat Washer and one (1) 1/4-20 x 7/8" Pan Head Phillips Machine Screw through the support arm and into the metal plate. Turn screw a couple of turns to fully engage threads. **DO NOT FULLY TIGHTEN AT THIS TIME.**
8. Repeat step 7 to install washers and screws into remaining three support arms and plates.
9. After all four support arms have screws installed, fully tighten all four screws with #2 Phillips Screwdriver.
10. Complete freestanding or surface mount instructions below as applicable.

NOTE: to use an umbrella with the Wellspring™ table, the table MUST be surface mounted to resist tipping.

Instructions

Assembly
Installation
Operation

Freestanding Table Assembly Instructions

1. For Freestanding tables; locate and install the four (4) adjustable glides into the table legs as shown in Figure 5. Finger-tighten glides to allow for adjustment and leveling after installation.

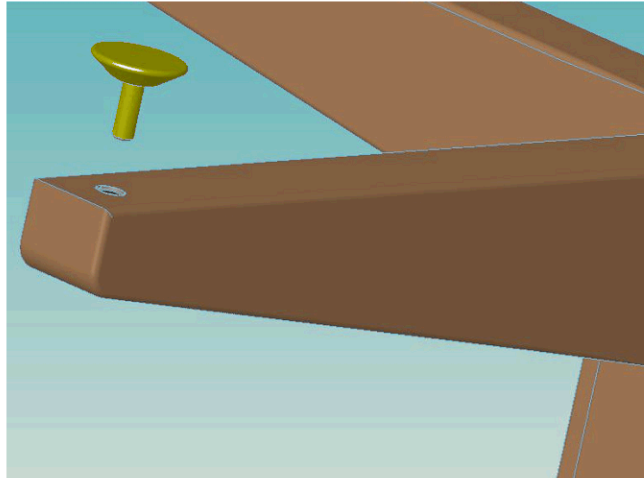


Figure 5 – Adjustable glide installation

2. Double check all screws have been properly tightened.
3. Using two or more people, carefully stand table upright onto its base and move to desired position.
4. Adjust glides to level and stabilize table.

Instructions

Assembly
Installation
Operation

Surface mounting instructions

1. Complete Table Top and Base Assembly Instructions above, to mount table top to base.
2. Prepare proper footing or slab as required.
3. Note: Installation on an unknown pre-existing concrete is not recommended. Landscape Forms is not responsible for footing or slab installation.
4. Place unit in desired position.
Note: DO NOT DRAG Table across concrete or other rough surfaces. This could damage the glides and/or the powdercoat on the bottom of the mounting plate.
5. Using the mounting plate as a template, mark anchor hole locations.
6. Move table to allow access to mounting holes.
7. Drill holes at marked position for appropriate anchors. Note: Anchors must be no larger than 5/16" diameter. Non-corrosive anchoring hardware is recommended.
8. Although anchoring procedure and hardware is the responsibility of the installer, Landscape Forms suggests the following:
 - Poured concrete: 5/16" diameter, corrosion resistant, stud type expansion anchor, minimum of 2-1/2" long.
 - Pavers: If pavers are installed over poured concrete, use 5/16" diameter, corrosion resistant, stud type expansion anchor with enough length to go through paver and minimum 2" into concrete.
 - Wood deck (at least 2" nominal thickness): 5/16" diameter corrosion resistant hex head lag bolt, at least 2-1/2" long.
9. If using expansion anchors, install anchor leaving approximately 1/2" thread protruding from the table base. Place table in position, install hex nut with washer and tighten gently to prevent marring finish.
10. If using lag bolts, place table in position and install lag with washer. Tighten gently to prevent marring finish.

ASSEMBLE WITH CARE! Pangard II® Polyester Powdercoat is a strong, long-lasting finish. To protect this finish during assembly, place unwrapped powdercoated parts on packaging foam or other non-marring surface. Do not place or slide powdercoated parts on cement or other hard or textured surface – this will damage the finish causing rust to occur. Use touch-up paint on any gouges in the finish caused by assembly tools.

Instructions

Assembly
Installation
Operation

Umbrella mounting instructions

NOTE: to use an umbrella with the Wellspring™ table, the table MUST be surface mounted to resist tipping.

11. Complete surface mounting instructions above.
12. Double check all screws have been properly tightened.
13. Insert rubber umbrella grommet into center hole with the Landscape Forms logo facing up.
14. Insert umbrella pole through the rubber grommet and align cross-hole in the pole with the cross-hole in the base support.
15. Install 1/4-20 x 5" Hex Head Cap Screw and 1/4" washer as shown in figure 6.
16. Install 1/4" washer and 1/4-20 Threaded Stop Nut W/ Nylon Insert onto bolt and tighten fully.

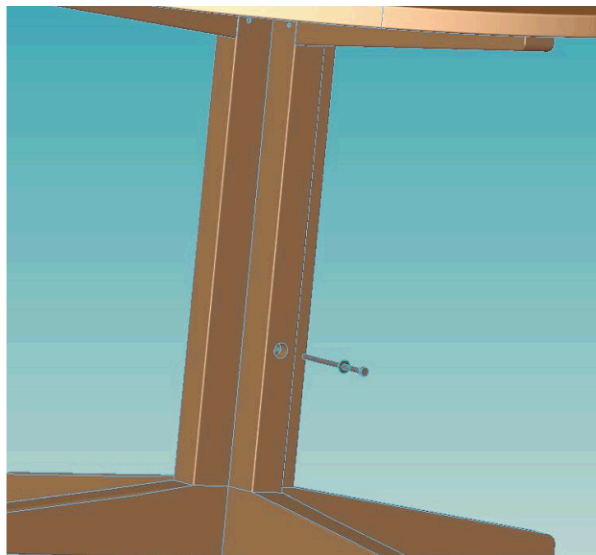


Figure 6 - Umbrella bolt installation