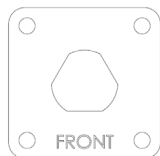


Included components



1x – wooden drill template



Anchor kit

Included: hardware is galvanized

- (4) anchor bolts, 3/4"-10 x 17" x 3" hook ,
- (8) heavy hex nuts, 3/4" x 10, (8) flat washers, .81 ID" x 1.5" OD x 0.13" thick

Tools Required

- Safety glasses
- Wrenches, 1-1/4"
- Level

LIGHTING LAYOUT RECOMMENDATIONS:

Refer to the product data sheet available at www.landscapeforms.com for recommendations for light pole spacing.

Landscape Forms is not responsible for site preparation and footings. The following chart gives necessary information for calculating proper footing size, depending on the specified light pole.

Pole Size	Base Overturning Moment (ft-lbf)	Base Shear (lbf)
10ft	551	110
13ft	925	142
16ft	1395	174

*Calculations per AASHTO 1994, assuming base of the pole is at grade level, with 90mph fastest mile wind speed with 1.3 gust max.

INSTALLATION PROCEDURE FOR ANCHOR BOLTS:

1. Prepare footing as required by local codes.
2. Install anchor hooks, hex nuts, washers and wooden template as shown in Fig 2. Level template in all directions. **Note:** template thickness is less than base plate thickness. Dimensions given account for the difference.
3. After footing has properly cured, remove wooden template. Do not remove lower hex nuts or washers.

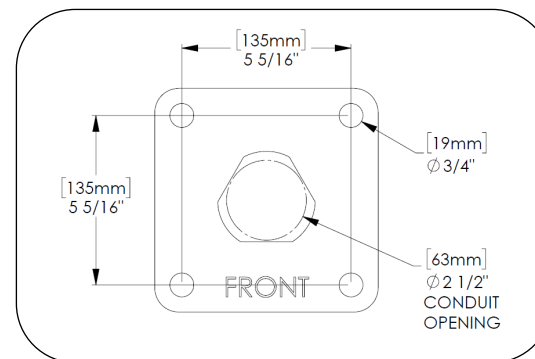


Fig. 1 – wooden template

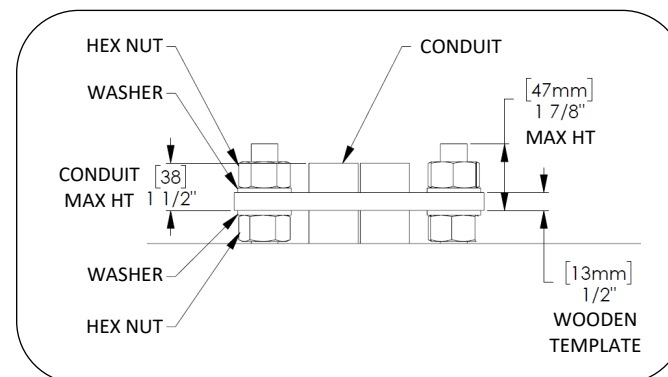


Fig. 2 – MAX conduit and anchor bolt heights