

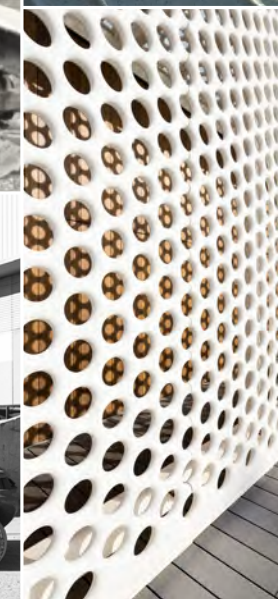
Escofet

landscapeforms®

## escofet®

Since 2012, Landscape Forms has been the exclusive North American partner of Barcelona-based Escofet, offering a broad collection of its expressive and functional site elements. Escofet and Landscape Forms' partnership is a natural one — each company shares a respect for design and the contribution of great designers and artists, a focus on craft, and a drive to innovate through materials, techniques, and processes.





**Escofet innovation combines age-old cement and water with a wide range of natural aggregates and industrial and recycled materials to produce cast stone products with groundbreaking structural properties and design possibilities.**

The company's mastery of materials and a technologically advanced casting process enable Escofet to produce large-scale organic forms, crisp-edged geometric pieces, and thin-profile shapes in cast stone, wood, metal, and Ultra High Performance Concrete.

Escofet has worked with artists and architects throughout its history, beginning in 1886 with celebrated Catalan architect Antoni Gaudí and later artist Joan Miró, who created exquisite terrazzo tiles. As the company shifted to making concrete site elements, it continued partnering with industrial designers and artists from around the world, among them Ricardo Bofill, Arata Izozaki, Jen Nouvel, Richard Rogers, Buro Poppinga, and Toyo Ito.

Technology and craft come together through the finishing techniques that Escofet's skilled artisans apply to each piece, preserving individual surface qualities and protecting against weathering. The aggregates' pigments combined with acid etching and polishing create subtle, earth-toned colors in sculptural pieces that marry natural and built environments.



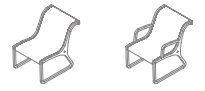
## binocular



Binocular's design is a playful reference to field glasses. The benches provide both shelter and views that are sized to fit individuals and pairs. Metal structures raise the benches slightly, making them appear to levitate in the landscape. Binocular is made of Escofet's proprietary Slimconcrete®.

Designer: **Buro Poppinga**

## concret chair



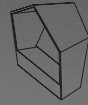
The Concret chair's curved form blends comfort and ergonomic design. Escofet's proprietary Slimconcrete® material creates a chair that looks airy and light but still provides the strength and durability of concrete. The chair has a cast aluminum structure and is available with or without arms.

Designer: **BAAS arquitectura**





## domus shelter



Domus is a project by Ramón Úbeda and Otto Canalda that utilizes the properties of Ultra High Performance Concrete to make possible its innovative one-piece shelter and bench design. Domus provides refuge from the rain and shade from the sun.

Designer: Ramón Úbeda & Otto Canalda



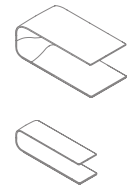
## extasi



Extasi's triangular shape and soft rounded edges, coupled with a freestanding, smaller scale, create seating for outdoor plazas and parks that suggests the intimacy of indoor furnishings. Extasi is made of cast stone, and is acid etched and waterproofed.

Designer: Arriola&Fiol, arquitectes





## grasshopper table and bench

The Grasshopper table and bench take full advantage of the ultra-thin concrete; curved, elongated forms; and a smooth surface create a dynamic and light appearance. Its incomplete shape produces two personalities. At one end, it closes gently to become a place to chat. At the other end, it opens to invite people to contemplate and observe surrounding views.

**Designer:** Makoto Fukuda





## jules et jim



Jules et Jim are versatile Ultra High Performance Concrete planters with bases that form a bench. Jim and Jules can live as separate elements or in harmony as complementary forms. The planter-benches rest on paving with no need for anchors. Drainage in the planters is carried through an opening hidden in the base; no other drainage is needed. Both planters have a volume capacity of 2400 liters and are suitable for planting species of an average height.

Designer: Javier Mariscal



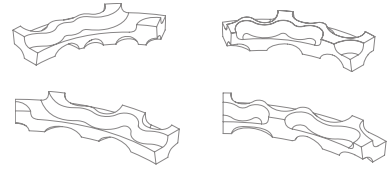
## mirador

The Mirador planter's oval-shaped design is formed by four molded concrete pieces. It has a built-in bench around the perimeter. Each planter-bench can seat up to 12 people. The planter-benches rest on paving with no need for anchors.

Designer: Balmori Associates







## naguisa

Naguisa turns spaces into harmonious landscapes. Its curved, hollowed-out surfaces create meandering, organic resting points. Naguisa is at home in large-scale parks and plazas as well as narrow pedestrian streets and small-scale natural areas. The 63-centimeter high central zone of the reinforced cast stone bench serves as a backrest/armrest, while the 38 centimeter-high zone gently beckons sitters.

By joining several of the four-meter curved arcs together, closed circles with 7.5 or 11 meter diameters can be formed. The pieces can also be arranged in parallel lines, creating a sinuous bench application. In 2007, Naguisa was awarded the Silver Delta Prize by the Association of Industrial Designers for the Encouragement of the Decorative Arts (ADI-FAD).

**Designer:** Toyo Ito







## niu oval

Niu provides a modest oasis that contrasts the hardness of urban environments. The formal simplicity of Niu's ring of cast stone is versatile, serving as a large-format planter, resting place, sand or grass container, or tree surround. The changing angles of the upper plane give the planter an organic dynamic, playing with the light to create changing reflections.

Designer: Nahrang Disseny



## twig

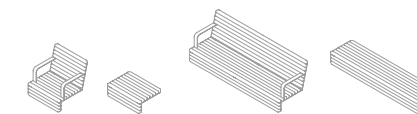


Twig is a modular bench system made of reinforced concrete available with or without a back. The freestanding three-armed pieces create branch-like formations, and the gently curved back offers a comfortable resting point. A series of joined benches become meeting places in public spaces or borders that connect paved and green spaces.

**Designer: Alexander Lotersztain**



## universe system



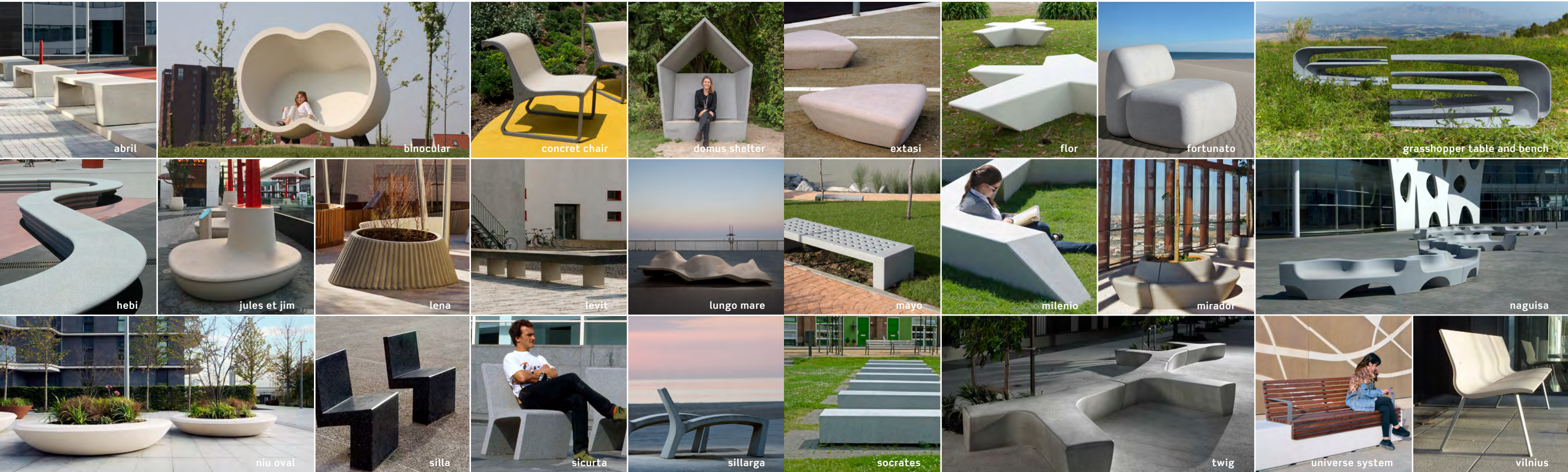
The Universe System is a set of simple, comfortable and universal accessories, suitable for any element that requires a seat. It was designed as a complement to Escofet's concrete backless bench collection. The system includes lightweight steel and wood benches and chairs with armrests and a backless bench and backless seat. All rest on standard backless concrete benches or on "in situ" masonry walls. The seats are made from FSC-certified tropical wood boards with steel supports and arms, and are anchored to a wall or bench with stainless steel screws and metal expansion plugs.

**Designer: Escofet**





# statement of line





## sense of place

Escofet is a company born in the city and rooted in the urban landscape. Escofet products in their volume, weight and form are particularly well suited to large-scale public spaces: parks and plazas, streetscapes, university and corporate campuses. High-profile products for high-profile projects, these solid, striking site elements command attention and offer innovative ways for organizing space, accommodating people in the public realm and creating a sense of place.



landscapeforms.com

Specifications are subject to change without notice.  
Landscape Forms supports the Landscape  
Architecture Foundation at the Second Century level.  
©2018 Landscape Forms, Inc. Printed in U.S.A.

800.521.2546 269.381.3455 fax  
7800 E. Michigan Ave., Kalamazoo, MI 49048

landscapeforms®

DESIGN. CULTURE. CRAFT.