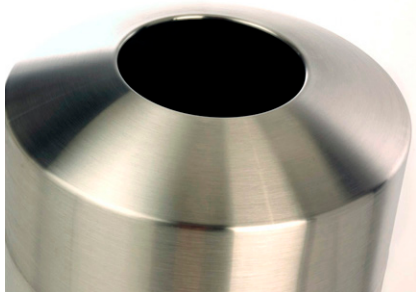


STEELY CAN

Product Data Sheet




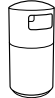
Steely's made of strong stuff: type 304 solid stainless that's stable, dent-and-scratch resistant and very durable. Its fitted top provides a snug fit with added structural integrity. Its brushed finish has contemporary style appeal. And there's something going on under that handsome lid. Steely Can's unique liner stabilizer slots grab the bag and hide it from view.


Litter Receptacle

- Steely Can litter receptacle is a top or side opening unit, with a 39 gallon capacity.
- Fitted top locks to liner stabilizer with slots that hold garbage bag in place.
- Litter is freestanding, and constructed of Type 304 solid stainless steel with brushed finish.

To Specify

- Select Steely Can.
- Specify top or side opening.

	DIAMETER	HEIGHT	PRODUCT WEIGHT
	20"	33"	42 lb
	20"	42"	48 lb



Visit our landscapeforms.com for more information. Specifications are subject to change without notice.

Landscape Forms supports the Landscape Architecture Foundation at the Second Century level.

©2016 Landscape Forms, Inc. Printed in U.S.A.

Landscape Forms, Inc. | 800.521.2546 | F 269.381.3455 | 7800 E. Michigan Ave., Kalamazoo, MI 49048