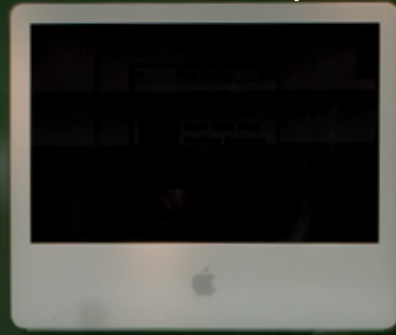
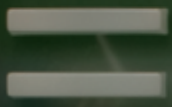
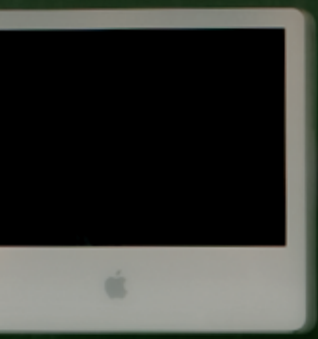


landscapeforms®



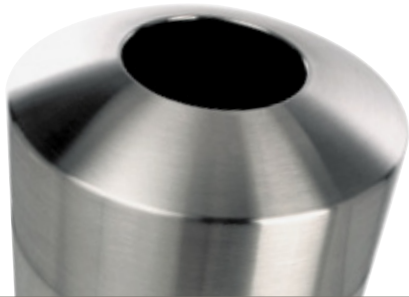
up. On a Mac.



steely can

Our Purpose Is To Enrich Outdoor Spaces

We believe in the power of design and its ability to influence and elevate the quality of public space. High quality products and outstanding customer experience makes us one of the world's premier designers and manufacturers of outdoor commercial furnishings.



Steely Can Specifications

Steely Can litter receptacle is a top or side opening unit, with a 39 gallon capacity. Fitted top locks to liner stabilizer with slots that hold garbage bag in place. Litter is freestanding, and constructed of Type 304 solid stainless steel with brushed finish.



20" x 33"



20" x 42"

dia x h

To Specify

Select Steely Can. Specify top or side opening.

Steely Can is...

Smooth. A lot of flash to hold the trash and plenty of substance, too.

Steely's made of strong stuff: type 304 solid stainless that's stable, dent-and-scratch resistant and very durable. Its fitted top provides a snug fit with added structural integrity. Its brushed finish has contemporary style appeal. And there's something going on under that handsome lid. Steely Can's unique liner stabilizer slots grab the bag and hide it from view.



www.landscapeforms.com

Download product photos, brochures, color charts, SketchUp components, technical information, CAD details, CSI specifications, assembly instructions.

Specifications are subject to change without notice.

Manufactured in U.S.A.

Landscape Forms supports the Landscape Architecture Foundation at the Second Century level.

© 2008 Landscape Forms, Inc. Printed in U.S.A.

landscapeforms®

800.521.2546 269.381.3455 fax

431 Lawndale Avenue, Kalamazoo, MI 49048

www.landscapeforms.com



Metal is the world's most recycled material and is fully recyclable. Consult our website for recycled content for this product. Powdercoat finish on metal parts contains no heavy metals, is HAPS-free and has extremely low VOCs.