



landscapeforms®

# SHUFFLE Applications Guide

## **Index**

Overview	<b>3</b>
Corporate or Educational Campus Application 1	<b>4</b>
Corporate or Educational Campus Application 2	<b>7</b>
Corporate or Educational Campus Application 3	<b>10</b>
Public Space Application 1	<b>14</b>
Public Space Application 2	<b>17</b>
Public Space Application 3	<b>20</b>

**SHUFFLE** combines advanced technology and modern design to bring unparalleled new functionality to outdoor spaces. Integrating lighting, connectivity, and safety and communication devices, it creates a sense of security and well-being outdoors—enhancing the quality of life for all who share the space. A smart multifunctional system with lighting at its core, SHUFFLE is designed with plug-and-play simplicity in four different models, each with distinct functionality: SHUFFLE Campus, SHUFFLE Light, SHUFFLE SOS, and SHUFFLE Security. Each SHUFFLE model is offered in three configurations—Active, Core, and Basic—to create greater depth in adaptability and ensure that the right feature set can be paired with the context it will occupy. This planning guide outlines just a few of the outdoor settings to which SHUFFLE can bring new value, highlighting how different features can engage with different environments to enhance a range of outdoor experiences in innovative and meaningful ways.



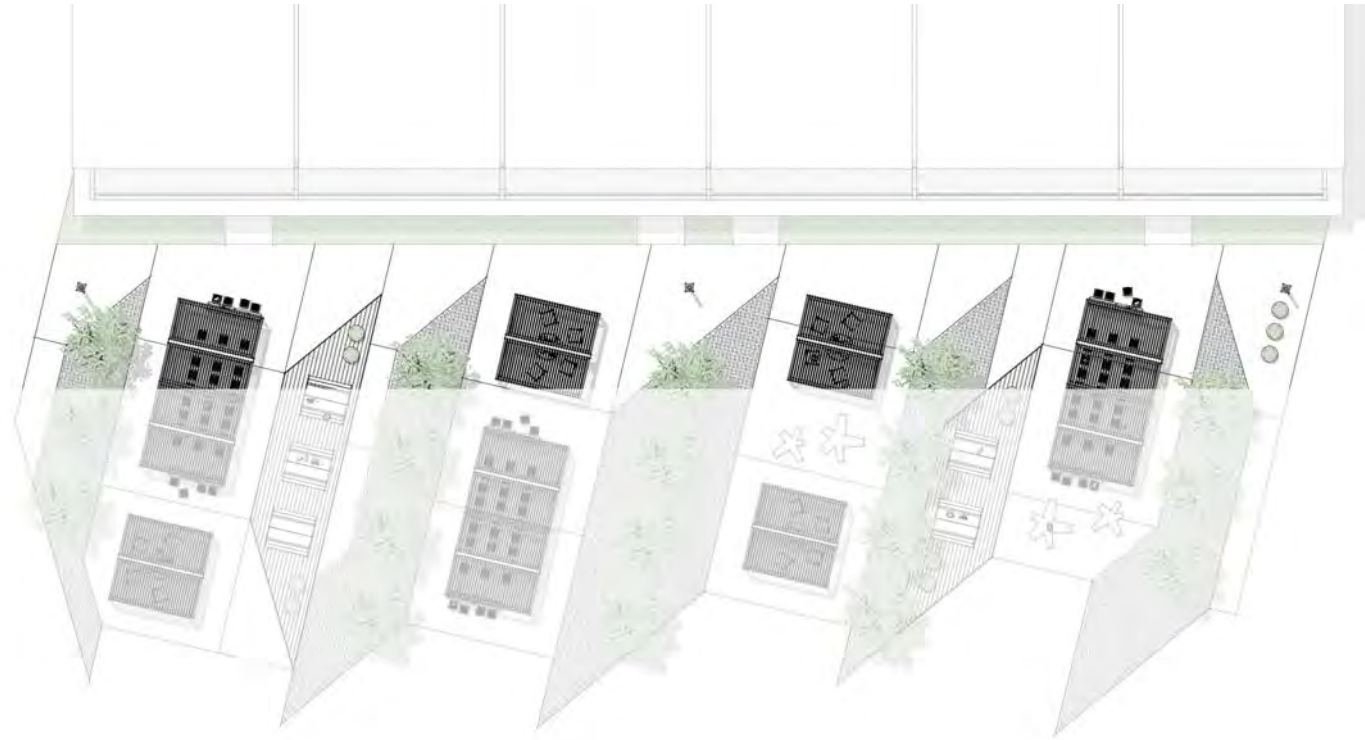
## Corporate or Educational Campus | (Application 1) Work or Learn

**Place:** Meeting Space

**Product:** SHUFFLE Campus Basic

On corporate and academic campuses, SHUFFLE Campus Basic offers a plug-and-play solution to provide employees and students with the resources to work, study, connect and collaborate outdoors. Outdoor productivity zones are sought-after destinations on high-profile campuses, providing occupants with safe and rejuvenating spaces to work in nature, the sunlight and fresh air.

A variety of outdoor structures and site furnishings creates different alcoves for different types of work—from large meetings, breakout sessions, and study groups, to smaller, intimate conversations and solo productivity.



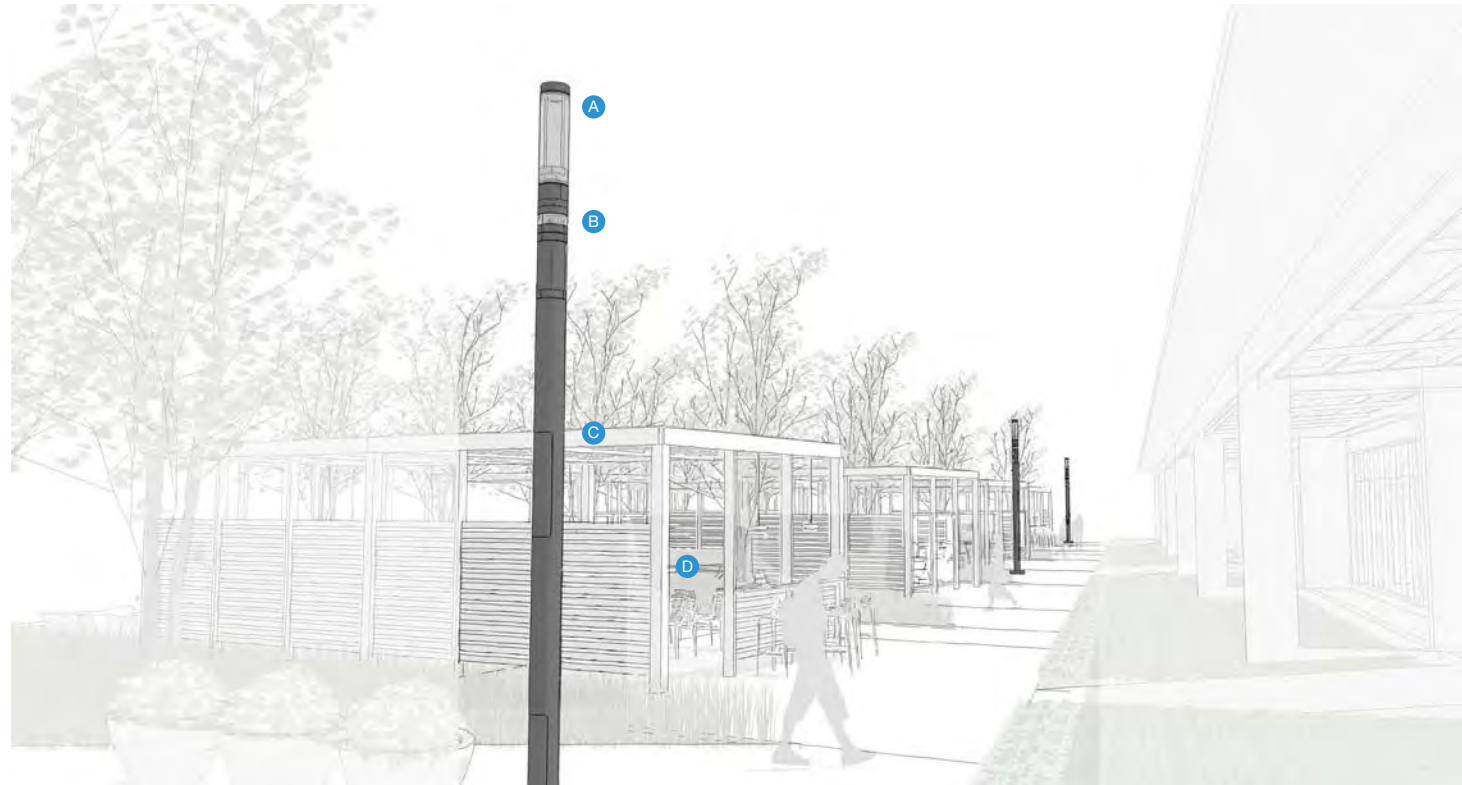
## Corporate or Educational Campus | (Application 1) Work or Learn (cont.)

- A. SHUFFLE** wireless backhauls or terminal unit module offers fast and reliable access to network-attached storage, online courses and other digital platforms needed to enhance outdoor productivity.
- B. SHUFFLE** PIR sensors can trigger light-on-demand scenarios to provide the right light any time.
- C. SHUFFLE** intercom modules enable on-demand bidirectional communication, helping people in need receive prompt assistance and reinforcing the senses of security and confidence for people enjoying the space.
- D. Upfit** glass panels also act as markerboards to support collaboration and presentation.



## Corporate or Educational Campus | (Application 1) Work or Learn (cont.)

- A. SHUFFLE** 360 light module provides eye-pleasing illumination to ensure comfort and security and reduce eye strain when working into the evening and during periods of low light.
- B. SHUFFLE** light ring modules create visual guidance cues with red, blue, green, or white LEDs.
- C. Upfit** louvered roof protect students and employees from the elements while reducing glare on digital screens.
- D. Upfit** slatted panels shade interiors and provide privacy without isolating interior space.



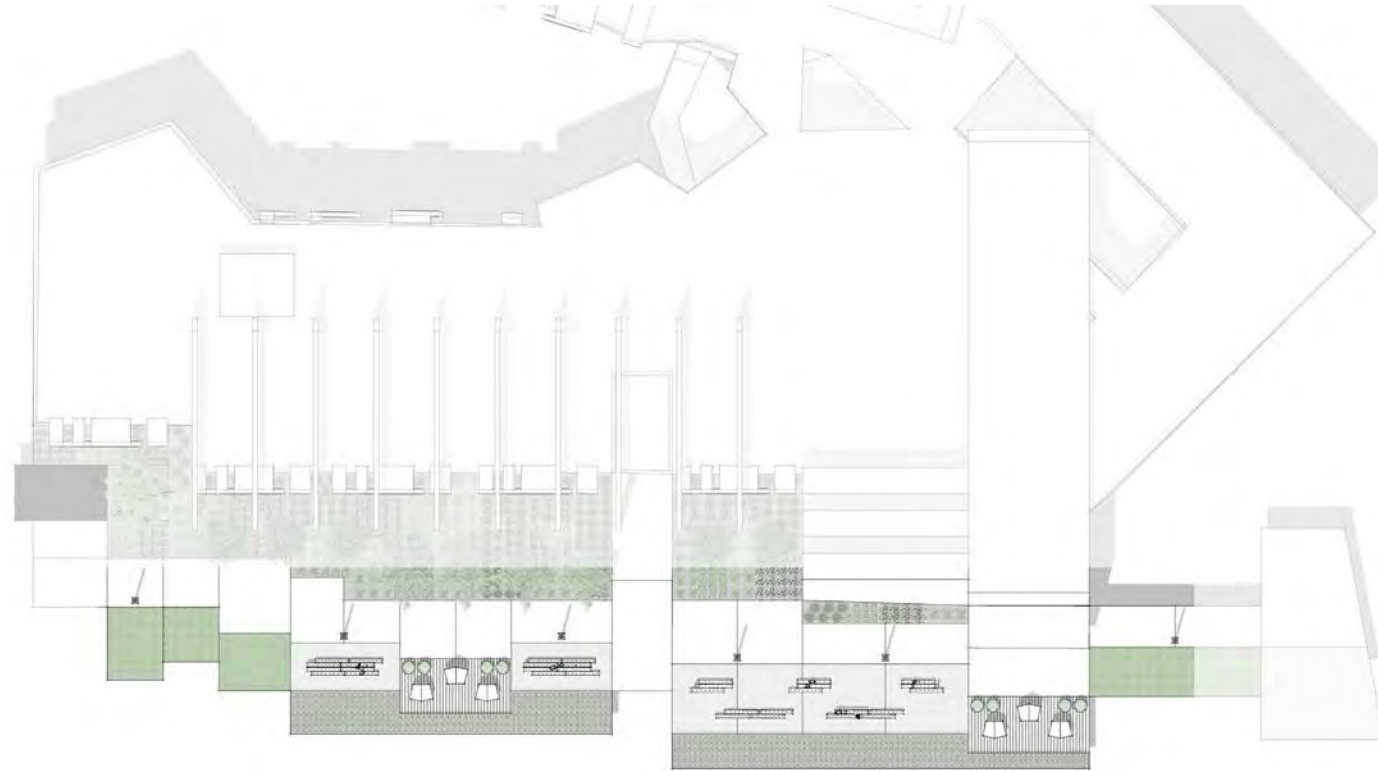
## Corporate or Educational Campus | (Application 2) Live, Work or Learn

**Place:** Commons

**Product:** SHUFFLE Campus Active

With SHUFFLE Campus Active and supporting site furnishings, outdoor common areas on business and academic campuses, medical and athletic complexes, shopping malls, and transit stations become multifunctional destinations for individuals and groups that inform, entertain, reassure, and connect.

The commons layout creates different zones for socializing, collaboration, productivity, and respite.



## Corporate or Educational Campus (Application 2) | Live, Work or Learn (cont.)

- A. SHUFFLE 360 light module** provides street or ambient lighting to create outdoor spaces that are safe, welcoming, and useful at all hours.
- B. SHUFFLE wireless backhaul or terminal unit module** provides a professional and secure Wi-Fi network for on-the-go productivity and entertainment, digital social connection, and access to valuable, site-specific information like shopping promotions, transit guidance, and event scheduling.
- C. SHUFFLE PIR sensors** can trigger light-on-demand scenarios to provide the right light any time.
- D. SHUFFLE intercom modules** enable on-demand bidirectional communication, helping people in need receive prompt assistance and reinforcing the senses of security and confidence for people enjoying the space.
- E. Kornegay Mex Bold planters** introduce greenery and delineate space between walking and seating areas.





## Corporate or Educational Campus (Application 2) | Live, Work or Learn (cont.)

- A. SHUFFLE** light ring modules create visual guidance cues with red, blue, green, or white LEDs.
- B. SHUFFLE** quadview camera modules reinforce feelings of safety and security, help to monitor traffic, and manage crowds, and offer facilities an in-depth understanding of the patterns of their visitors.
- C. Urbidermis Santa & Cole Rai** multi-tiered benches support mobile work, socializing, dining, and group gathering in a variety of postures.
- D. Escofet Domus** benches create quiet havens for individuals, providing privacy, enclosure, and shelter from the elements.



## Corporate or Educational Campus (Application 3) | Work or Learn

**Place:** Forum

**Product:** SHUFFLE Campus Core

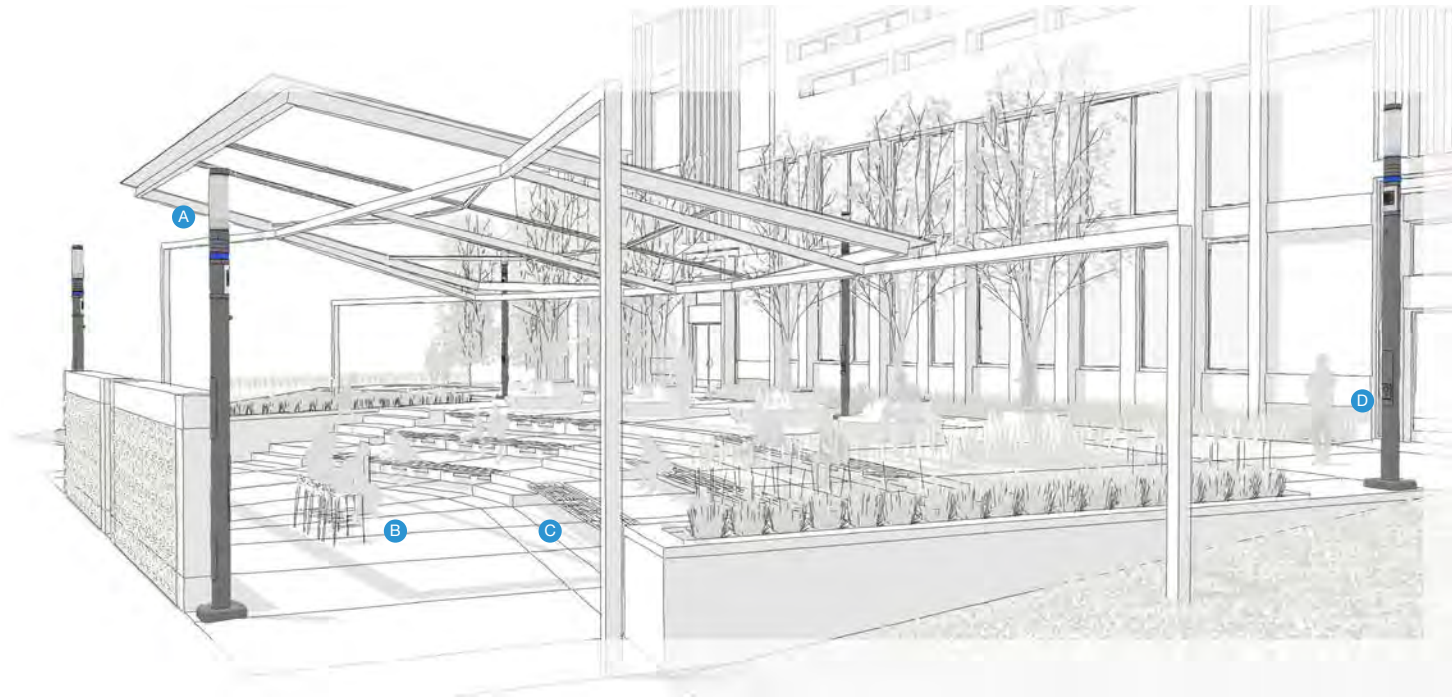
Powered by SHUFFLE Campus Core's smart lighting, connectivity, and integrated audio, outdoor fora on business, healthcare and academic campuses, shopping centers, parks, and other outdoor gathering areas create vibrant hubs for conversation, presentation, collaboration, and celebration of the performing arts.

A stepped amphitheater layout aids visibility and focuses attention on the stage area when in use. And when not in use, the tiered layout creates an open and welcome destination for outdoor seating and socializing.



## Corporate or Educational Campus (Application 3) | Work or Learn (cont.)

- A. SHUFFLE 360** light module provides high-quality LED illumination in and around the forum with clear, diffuse or partially diffuse options for enhanced visual comfort.
- B. SHUFFLE** loudspeaker modules support presentations and performances with options for tailored audio at both the front and rear of the venue.
- C. Link** front-of-wall mounted benches create simple, elegant amphitheater seating and soften the space with warm wood hues.
- D. SHUFFLE** intercom modules enable on-demand bidirectional communication, helping people in need receive prompt assistance and reinforcing the senses of security and confidence for people enjoying the space.



## Corporate or Educational Campus (Application 3) | Work or Learn (cont.)

- A. SHUFFLE** light ring modules create visual interest and offer helpful guidance and scheduling cues with red, blue, green, or white LEDs.
- B. SHUFFLE** PIR sensors can trigger light-on-demand scenarios to provide the right light any time.
- C. Escofet Mirador** planter-benches frame the rear of the forum with large plantings while also providing additional seating.
- D. Chipman** stools provide elevated perch seating for presenters at the front of the stage.



## Public Space (Application 1) | Live (cont.)

**A. SHUFFLE** 360 light module provides welcoming illumination with warm or neutral white LEDs and the smart control features for dimming and light-on-demand scenarios.

**B. Carousel** low tables surrounded by **Cochran** lounge chairs provide a casual destination to read, relax and connect comfortably with a phone or laptop.



## Public Space (Application 1) | Live (cont.)

- A. SHUFFLE** PIR sensors can trigger light-on-demand scenarios to provide the right light any time.
- B. Disc** sun shades paired with **Chipman** tables and chairs make for protected dining and social areas.
- C. GO OutdoorTables** create a focused location for intimate conversation, collaboration and solo work supported by GO's canopy shelter and integrated solar power for additional light and charging.



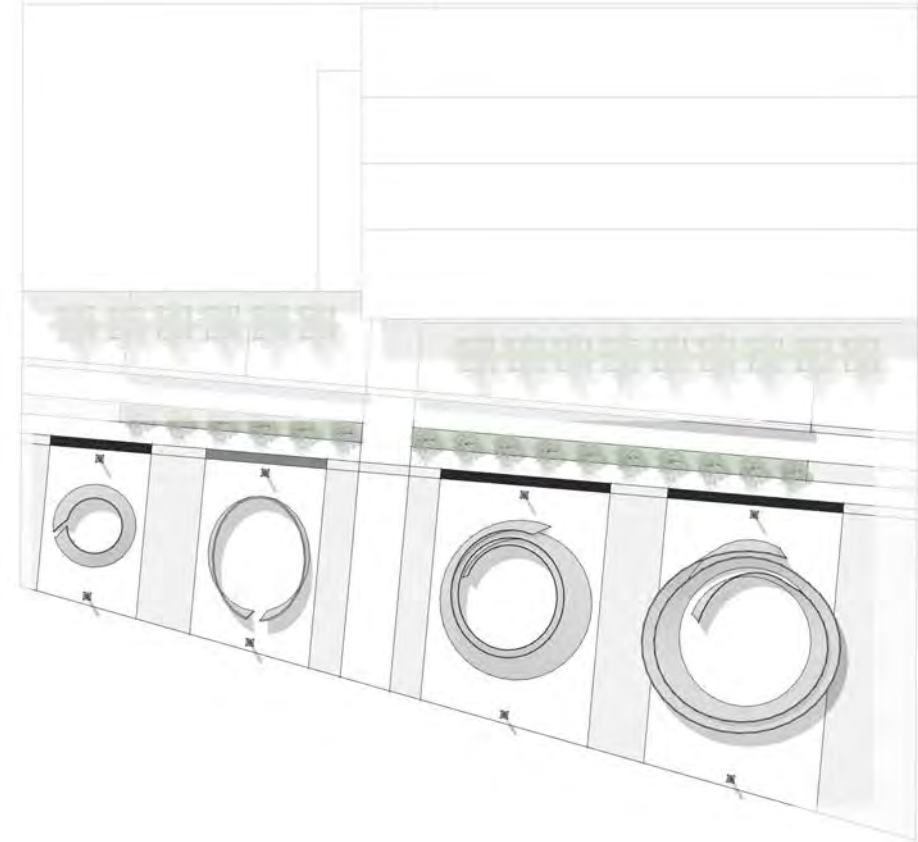
## Public Space (Application 2) | Live or Play

**Place:** Museum

**Product:** SHUFFLE Light Core

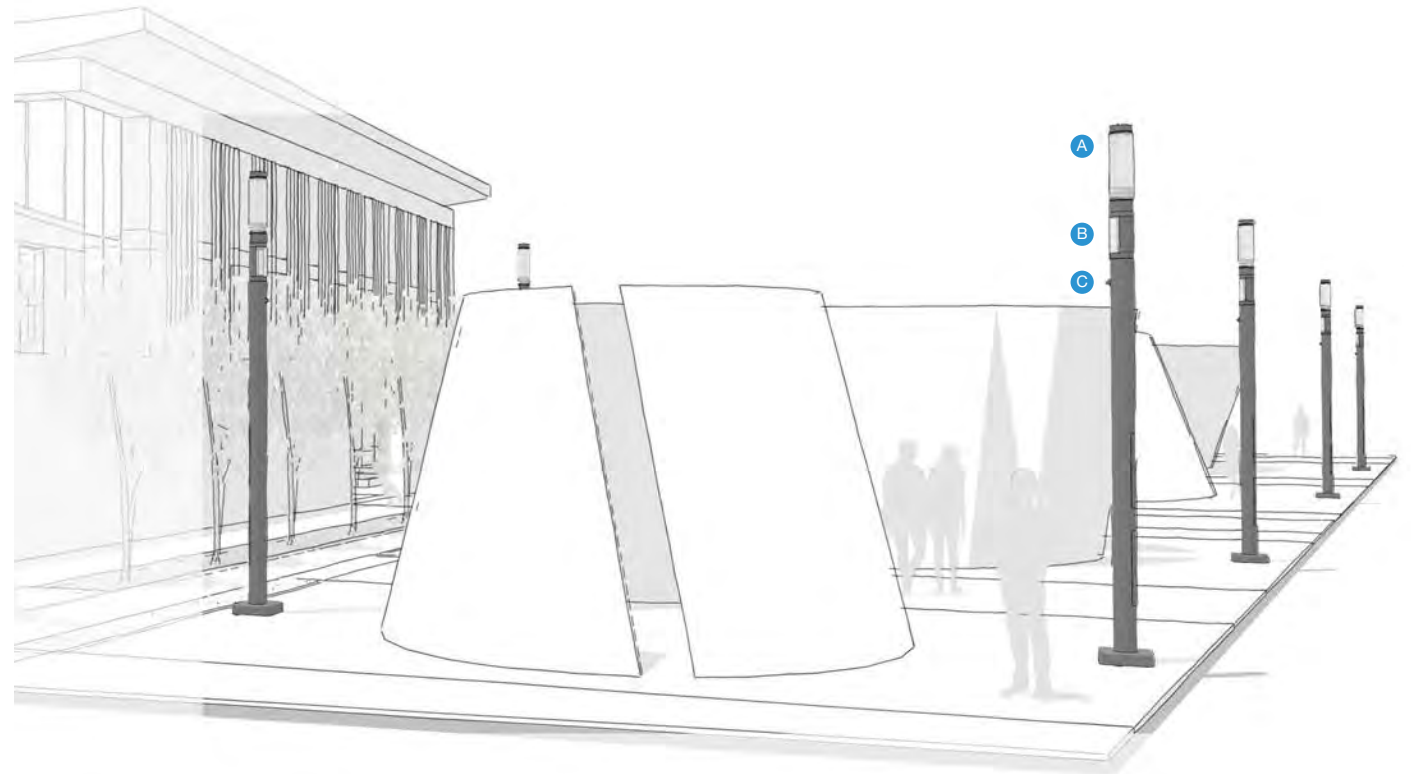
Celebrating public art and architecture, SHUFFLE Light Core supports outdoor museum grounds with robust options for beautiful and intentional illumination in a minimalist design package that doesn't distract from its surroundings.

Highlighting architectural details, monuments, statues and art installations, SHUFFLE Light Core is a plug-and-play solution that covers all the lighting needs for highly designed environments.



## Public Space (Application 2) | Live or Play (cont.)

- A. SHUFFLE 360** light module provides welcoming illumination with warm or neutral white LEDs and the smart control features for dimming and light-on-demand scenarios.
- B. SHUFFLE 180** light module provides focused illumination to highlight key features of art and architecture to create more immersive and visually compelling viewing experience.
- C. SHUFFLE PIR** sensors can trigger light-on-demand scenarios to provide the right light any time.





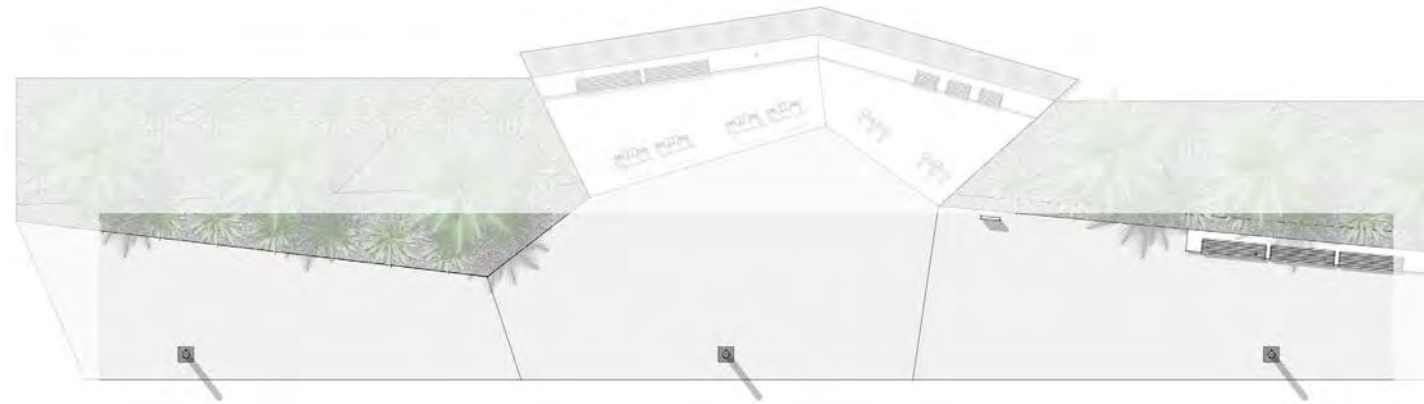
## Park (Application 3) | Live or Play

**Place:** Fitness Micropark

**Product:** SHUFFLE Light Active

Supporting health, wellbeing, and a connection to nature, fitness microparks are a sought-after amenity in urban spaces. With SHUFFLE Light Active's streamlined form and smart, multifunctional lighting, valuable outdoor real estate can better serve its passersby.

With a long, linear layout, a fitness micropark efficiently makes use of outdoor space in streetscapes, along pedestrian promenades and boardwalks to make routine physical activity more accessible for all.



## Park (Application 3) | Live or Play (cont.)

- A. SHUFFLE 360** light module provides generous illumination to give the fitness micropark a sense of place and ensure safety and usability at all hours.
- B. SHUFFLE 180** light module provides focused illumination to highlight features such as public outdoor fitness equipment.
- C. SHUFFLE** light ring modules demarcate the fitness micropark, create visual interest and guide people to the installation.
- D. SHUFFLE** PIR sensors detect motion in the surrounding perimeter to trigger light-on-demand scenarios and provide a welcoming and reassuring gesture.
- E. Link** top-of-wall mounted benches provide elegant linear seating for rest and rehydration during workouts.





landscapeforms®

# SHUFFLE Applications Guide