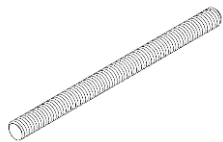


Included components:



4X - 3/8-16 x 5-1/8"
long threaded rod
(single litter)

Tools Required for embedded option:

- Safety glasses
- Hammer drill with $\varnothing 3/4"$ masonry bit for single unit
- Hammer drill with $\varnothing 7/8"$ masonry bit for double unit
- Chemical anchoring adhesive (Hilti HIT RE 500 or equivalent)

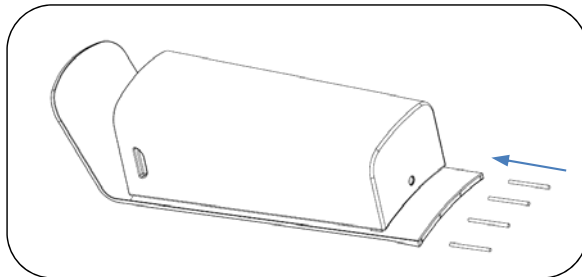


Fig. 1 – Single embed litter install threaded rods

PROCEDURE FOR INSTALLATION:

1. Prepare proper concrete slab as required.

Note: DO NOT DRAG unit across concrete or other rough surfaces. This could damage the finish.

For EMBEDDED:

1. For single unit, install four threaded rods into bottom of unit as shown in Fig. 1. For a double unit, the threaded rods are shipped installed.
2. Set unit in position and mark hole locations on concrete.
3. Drill holes according to Fig. 2 or 3, depending on litter style. Clear holes of debris.
4. Test fit unit into holes, ensuring that the casting sits firmly on grade. For a double unit, the nut and washer should be installed below grade.
5. Remove unit.
6. Fill holes with anchoring adhesive according to manufacturer's recommendations.
7. Set unit in position. Adhesive level will rise to the top of the hole.
8. Wipe away any excess adhesive before it begins to cure.
9. Brace unit as needed until adhesive has cured.

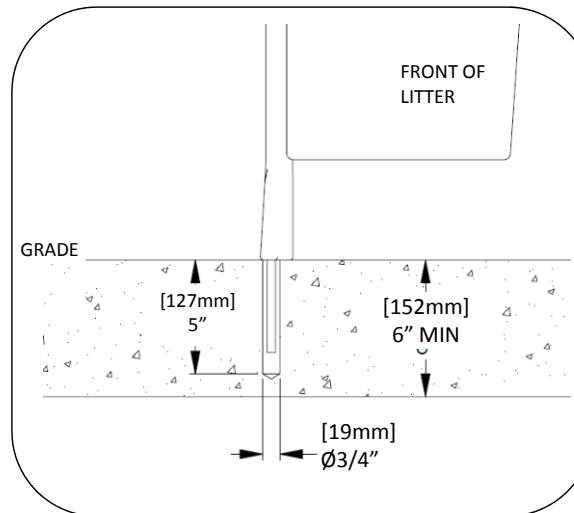


Fig. 2 – Single embed litter anchor hole size

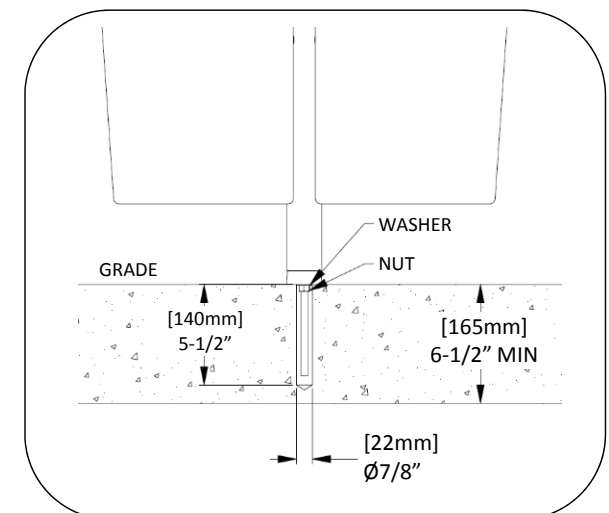


Fig.3 – Double embed litter anchor hole size

ASSEMBLE WITH CARE! Pangard II® Polyester Powdercoat is a strong, long-lasting finish. To protect this finish during assembly, place unwrapped powdercoated parts on packaging foam or other non-marring surface. Do not place or slide powdercoated parts on concrete or other hard or textured surface – this will damage the finish causing rust to occur. Use touch-up paint on any gouges in the finish caused by assembly tools.