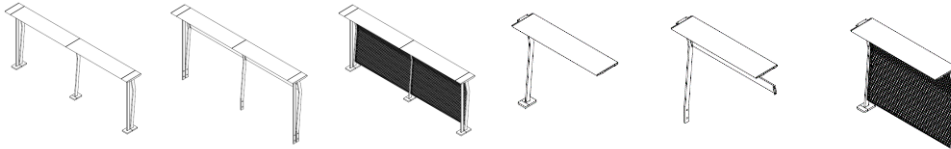


Rail Top



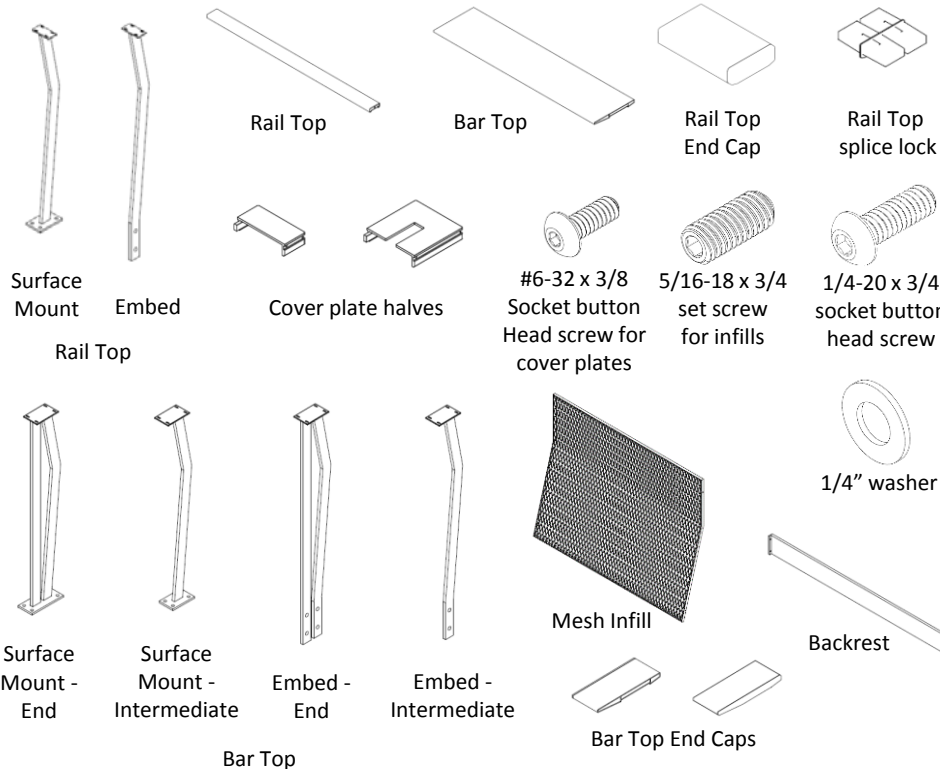
Bar Top

ASSEMBLE WITH CARE! Pangard II® Polyester Powdercoat is a strong, long-lasting finish. To protect this finish during assembly, place unwrapped powdercoated parts on packaging foam or other non-marring surface. Do not place or slide powdercoated parts on concrete or other hard or textured surface – this will damage the finish causing rust to occur. Use touch-up paint on any gouges in the finish caused by assembly tools.

Tools Required

- Safety glasses
 - 5/32 hex key
- For Surface Mount option:
- Anchoring hardware, 4 bolts required per support post. Maximum 3/8" diameter. Non-corrosive recommended. Height above surface mount plate cannot exceed 3/8" for cover plate to install properly.
 - Hammer drill with masonry bits
 - 5/64 hex key for cover plate assembly

Included components:



INSTALLATION:

1. Determine proper support locations based on site specifications. If unit is to be installed with a backrest or mesh infill, locate supports according to tapped hole locations. The backrest is intended to be utilized on the side opposite of the access side for the leaning rail. See Fig. 1 and Fig. 2.
2. Prepare proper footings or slab/sidewalk as required.

SURFACE MOUNT:

1. Set end post in place. See Fig. 3 and Fig. 4 for minimum slab sizes.
2. Mark holes. Move unit to drill holes.
3. Clear holes of debris.
4. Install anchors according to anchor manufacturer's recommendations.
5. Set the next post in the same manner. Posts are spaced 48" on center.

EMBEDDED:

1. Set the end post in place. Brace unit until concrete has set. See Fig. 5 for minimum pier footing recommendations.
2. Set the next post in place. Posts are spaced 48" on center.

RAIL INSTALLATION:

1. After first two posts in the run are installed, install the top extrusion. Insert the splice locks into the ends of the extrusions and then attach to the support posts. See Fig 6.
2. Install the end cap. See Fig. 6.
3. Continue installing the run, working in sections. Install the next post and top extrusion, ending the run by installing the end cap.

INFILL INSTALLATION:

1. The backrest or mesh infill can be installed after the rail system is in place.
2. See Fig. 7 for orientation of the backrest.

COVER PLATE INSTALLATION:

1. Install cover plates as shown in Fig. 8.

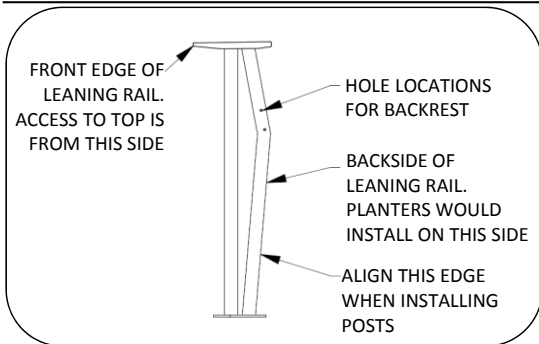


Fig. 1 – Side view of bar top, with backrest

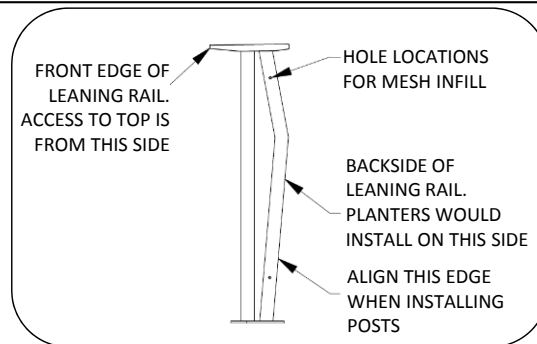


Fig. 2 – Side view of bar top, with mesh infill

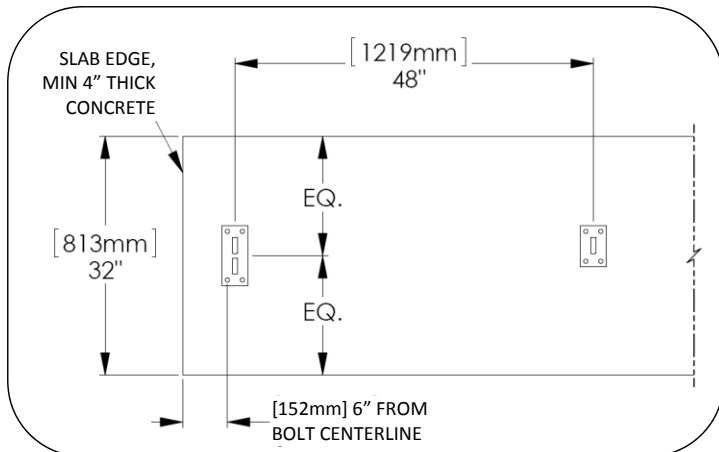


Fig. 3 – Surface mount, centered on slab

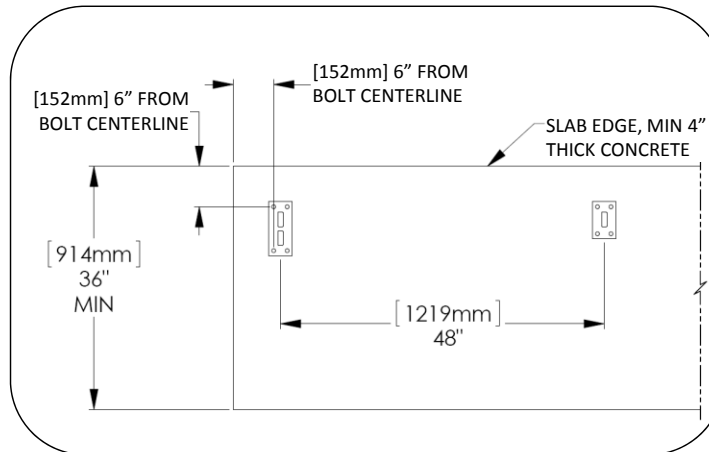


Fig. 4 – Surface mount, installed near edge of slab

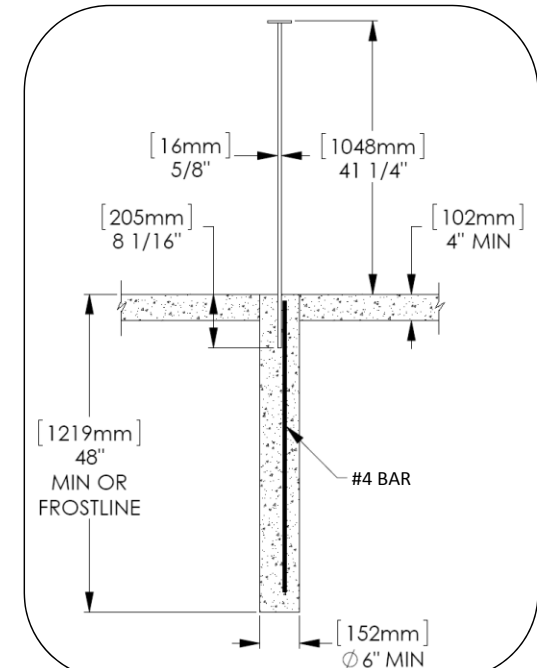


Fig. 5 – Embedded, pier foundation

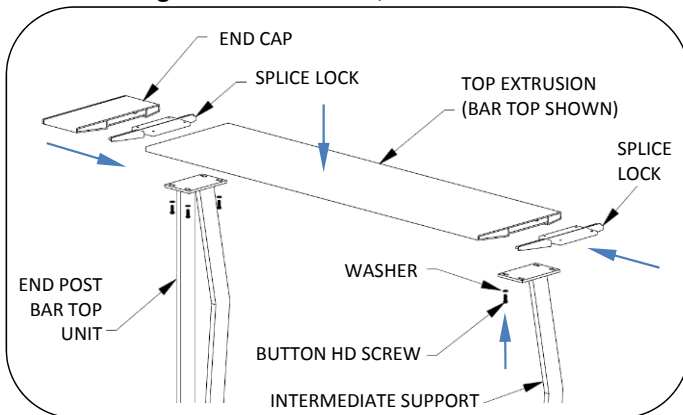


Fig. 6 – Install top extrusions, end cap

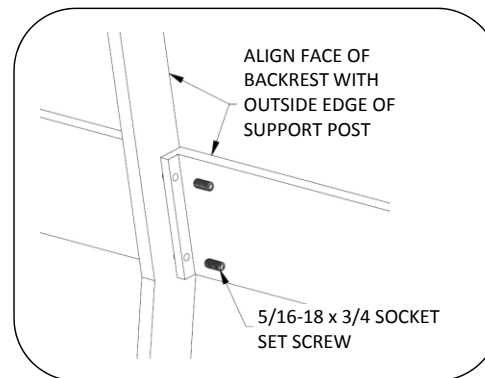


Fig. 7 – Install backrest

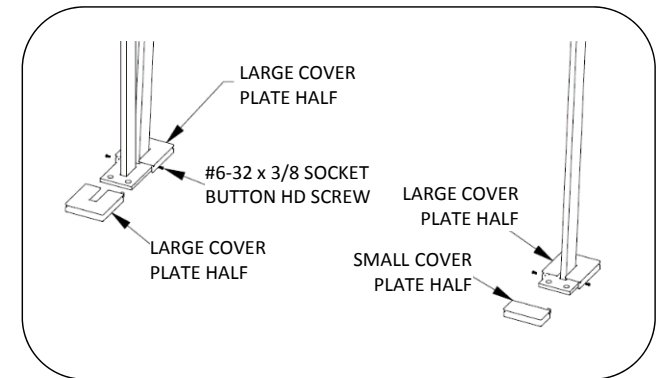


Fig. 8 – Install cover plate