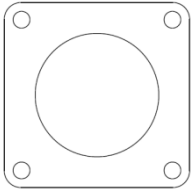
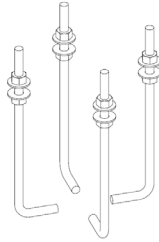


Included components



1x – drill template



Anchor kit

Included: hardware is galvanized

5in dia pole: (4) anchor bolts, 3/4"-10 x 17" x 3" hook ,
(8) heavy hex nuts, 3/4" x 10, (8) flat washers, .81 ID" x 1.5" OD x 0.13" thick

Tools Required

- Safety glasses
- Wrenches, 1-1/4"
- Level

LIGHTING LAYOUT RECOMMENDATIONS:

Refer to the product data sheet available at www.landscapeforms.com for recommendations for light pole spacing.

Landscape Forms is not responsible for site preparation and footings.

WARNING! Pole mounted luminaires must be attached either before or *immediately* after pole installation. Failure to do so may cause vibration damage to the pole and will void the pole warranty.

INSTALLATION PROCEDURE FOR ANCHOR BOLTS:

1. Prepare footing as required by local codes.
2. Install anchor hooks, hex nuts, washers and template as shown in Fig 1. Level template in all directions. **Note:** template thickness is less than base plate thickness. Dimensions given account for the difference.
3. After footing has properly cured, remove template. Do not remove lower hex nuts or washers.

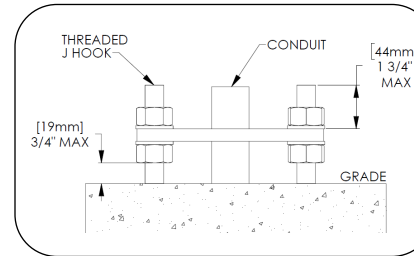


Fig. 1 – Anchor install detail

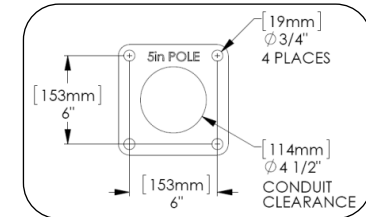


Fig. 2 – 5" diameter pole

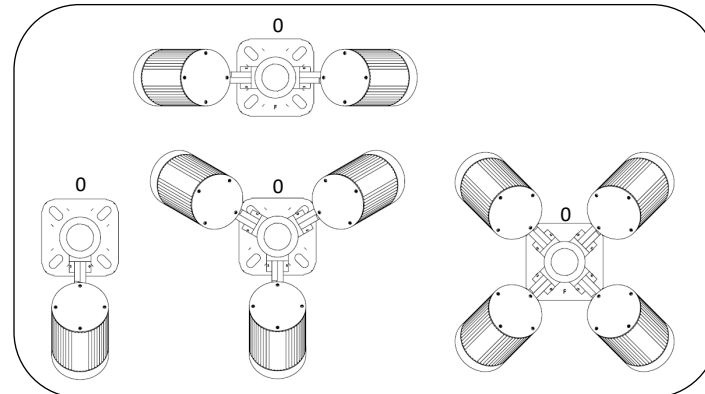
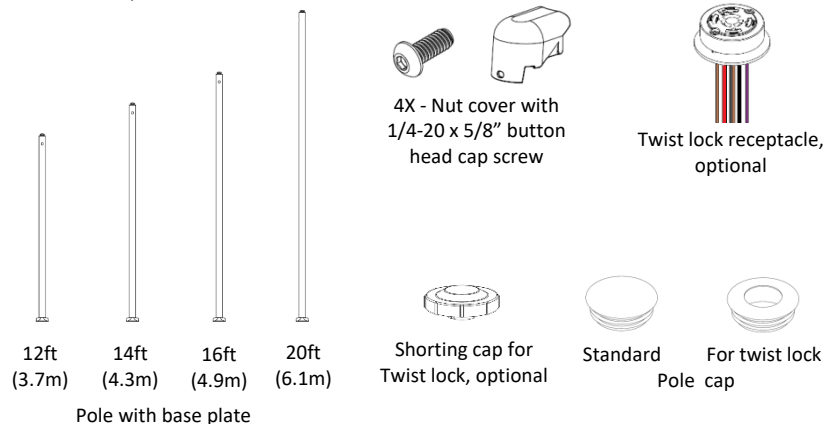


Fig. 3 – Base plate orientation to luminaire, handhole at 0deg

Included components



Tools Required

- Safety glasses
- Wrenches: 1-1/4"
- Wiring tools and connectors
- Proper personnel, crane or lift for hoisting unit onto anchors
- Level
- Dimming control, if required
- Hex key 5/32" for nut covers
- Locking-type control for twist-lock receptacle, if required
- Phillips head screwdriver

Landscape Forms is not responsible for site preparation and footings.

CAUTION! This unit is heavy. To avoid injury or damage to the finish, we recommend using a crane or lift for hoisting the unit onto the anchors.

WARNING! Pole mounted luminaires must be attached either before or *immediately* after pole installation. Failure to do so may cause vibration damage to the pole and will void the pole warranty.

ASSEMBLE WITH CARE! To protect this finish during assembly, place unwrapped powdercoated parts on packaging foam or other non-marring surface. Do not place or slide powdercoated parts on concrete or other hard or textured surface – this will damage the finish causing rust to occur. Use touch-up paint on any gouges in the finish caused by assembly tools.

INSTALLATION PROCEDURE FOR LIGHT POLE:

1. Lift the light pole into position over the installed anchors as shown in Fig. 4. Ensure that the base plate is resting on all four washers.
2. Install washer and hex nut as shown in Fig. 4.
3. Plumb and level the pole and tighten all anchors.
4. Install luminaire. Refer to separate luminaire installation guide for mounting luminaire to pole.
5. Make electrical connections. Refer to wiring diagram on luminaire installation guide.
6. Install the top cap on the pole (shipped with the pole). If the unit has a twist lock receptacle, assemble the receptacle and the top cap as shown in Fig. 5 and connect wiring before installing the top cap.
7. Install the nut covers as shown in Fig. 6.

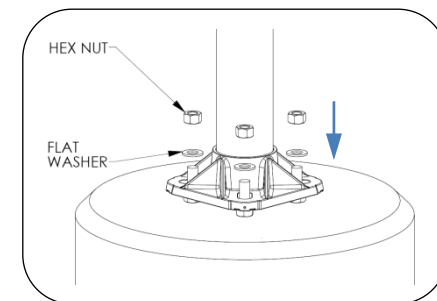


Fig. 4 – Install pole

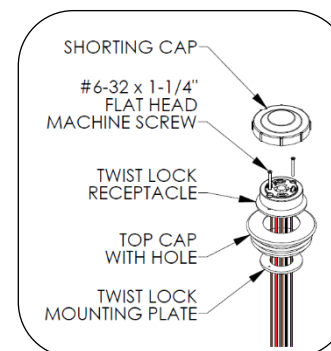


Fig. 5 – Install twist lock receptacle to top cap

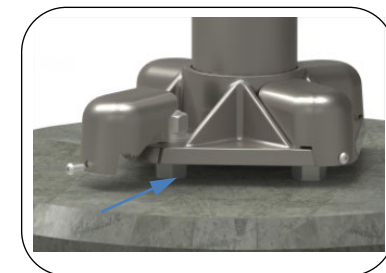


Fig. 6 – Install nut covers

Landscape Forms is not responsible for site preparation and footings.

WARNING! Pole mounted luminaires must be attached either before or *immediately* after pole installation. Failure to do so may cause vibration damage to the pole and will void the pole warranty.

Calculations per AASHTO 1994, assuming base of the pole is at grade level.

Pole Size	Wind Speed	Max luminaires	Base Overturning Moment (ft-lbf)	Base Shear (lbf)	Max EPA (ft ²)	Max luminaire weight (lbs)
5" dia x .125" wall x 12ft	110 mph w/ 1.3 gust	2	3464	317	1.74	24
5" dia x .125" wall x 14ft	110 mph w/ 1.3 gust	3	3490	340	2.62	35.5
5" dia x .156" wall x 14ft (GUC28)	110 mph w/ 1.3 gust	4	4240	390	3.48	47
5" dia x .125" wall x 16ft	90 mph w/ 1.3 gust	3	3490	340	2.62	36
5" dia x .156" wall x 16ft (GUC38)	110 mph w/ 1.3 gust	4	4240	390	3.48	47
5" dia x .125" wall x 20ft (GUC42, GUC49, GUC44)	90 mph w/ 1.3 gust	3	3490	340	1.46	36
5" dia x .156" wall x 20ft (GUC50, GUC45, GUC43, GUC46, GUC47)	90 mph w/ 1.3 gust	4	4240	390	2.72	48
5" dia x .188" wall x 20ft (GUC48)	90 mph w/ 1.3 gust	4	4950	350	3.48	47